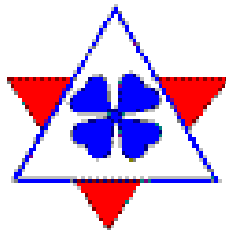


Govt. of India

CBHI



CENTRAL BUREAU OF HEALTH INTELLIGENCE

Directorate General of Health Services

Ministry of Health & Family Welfare

401 & 404-A Wing, Nirman Bhawan,

Maulana Azad Road, New Delhi-110108

Tel/Fax : (91) 011 - 23062695 and 23061529

E-mail : dircbhi@nic.in

Websites: www.cbhidghs.nic.in
www.hsprodindia.nic.in



WHO Collaborating Centre on Family of

International Classification (ICD - 10, ICF & ICHI)

Central Bureau of Health Intelligence (CBHI), established in 1961, is the **health intelligence** wing of the Director General of Health Services in the Ministry of Health & FW, GOI with the **vision** to have "**A strong Health Management Information System in entire country**". This national institution is headed by a SAG level medical officer with specialization in public health administration of Central health services (CHS), supported by officers from Indian Statistical Services as well as CHS and through its field survey and training units.

The **Mission** of CBHI is "**To strengthen Health Information system in each of the district in the country up to facility level for evidence based decision making in the Health Sector**".

The Objectives of CBHI are:

1. To Collect, Analyse & disseminate Health Sector related data of the country for evidence based policy decisions, planning and research activities
2. To identify & disseminate innovative practices for Health Sector Reforms
3. To develop Human resource for scientifically maintaining medical records in both Government & private medical Institutes in India
4. To Carry Out Need Based Operational Research for Efficient implementation of Health Information System & use of Family of International Classifications in India.
5. To sensitize & create a pool of Master Trainers in Health sector for implementation of Family of International Classification in India
6. To collaborate with National & International Institutes for imparting knowledge & skill development
7. To Collect & disseminate indicators for Health related Millennium Development Goals
8. To function as collaborating centre for WHO FIC in India & SEAR countries

2. Organization

- (a) In Dte.GHS / GOI the CBHI, headed by a Director, has three divisions viz. (i) Policy, Training and Co-ordination, (ii) Information & Evaluation, and (iii) Administration.
- (b) Six Health Information Field Survey Units (FSUs) of CBHI are located in different Regional Offices of Health and Family Welfare (ROHFW) of GOI at Bengaluru, Bhopal, Bhubaneswar, Jaipur, Lucknow & Patna; each headed by a Dy. Director with Technical & Support staff, which functions under the supervision of Sr. / Regional Director (HFW/GOI).
- (c) Regional Health Statistics Training Center (RHSTC) of CBHI at Mohali, Punjab (near Chandigarh), CBHI-FSUs and Medical Record Department & Training Centers (MRDTC) of Safdarjung Hospital New Delhi & JIPMER Puducherry; conduct various CBHI In-service Training Courses.

3. Major Activities of CBHI

3.1 CBHI collects primary as well as secondary data on various communicable and non-communicable diseases, human resource in health sector and health infrastructure from various Government organizations/ departments to maintain and disseminate Health Statistics through its annual publication "National Health Profile" which highlights most of the relevant health information under 6 major indicators viz. Demographic, Socio-economic, Health Status, Health Finance, Health Infrastructure and Human Resources.

3.2 CBHI collects the information on reform initiatives for Health Sector Policy Reform

Option Database (HS-PROD). [www.hsprodindia.nic.in]

Though States/UTs of India have reforms in the health sector, a lot of this goes unnoticed and hence not documented. Thus, MOHFW/GOI under its Sector Investment Program (SIP) is funded by the European Commission, entrusted CBHI to develop and maintain HS-PROD. It is a web-enabled database that documents and further creates a platform for sharing of information on good practices, innovations in health services management while also highlighting their failures that are very important for the success of NRHM. **More than 250 such initiatives under 16 key management areas** have been taken from a varied range of stakeholders like all the 35 State/ UT governments, development partners, non-government organizations etc. **Kindly visit this website for appropriate use & replication of reforms. CBHI is solicits information on such reforms from State/UT governments, health program managers, researchers, teachers and institutions in order to regularly update this national database.**

Sense of ownership and pride is to be taken in an effort like HS-PROD by all public health professionals.

3.3 For capacity building and human resources development, in health sector CBHI conducts in-service training programme for the officers and the staff working in various Medical Record Department & health institutions of the Central/State governments, ESI, Defense and Railways and well as private health institutions through its various training centres.

Following are the in-service training programmes for maintenance of Medical Records in Medical Institutions, conducted by the CBHI with the view to strengthen and develop human resources & health information system of the country.

- **National Level Man-power Development Training Programs:-**

S. No	Name of the training	Batch	Duration	Training Centre
1.	Medical Record Officer	2 (at each training centre)	1 Year	1. Medical Record Deptt. & T.C. at Safdarjung Hospital in New Delhi 2. JIPMER, Puducherry
2.	Medical Record Technician	4 (at each training centre)	6 Months	1. Medical Record Department & T.C. at Safdarjung Hospital in New Delhi 2. JIPMER, Puducherry

Training Calendar, Eligibility, Guidelines and Application Forms for all the above courses can be downloaded from the CBHI official website www.cbhidghs.nic.in

3.4 Capacity Building & Operation Research for Efficient health information system (HIS) including Family of International Classification (ICD-10 & ICF) use in India and South East Asia Region. CBHI is conducting National Level training course on Master trainers on ICD-10 & ICF at RHSTC at Mohali, Chandigarh. It is also organizing sensitization workshop on ICD-10 & ICF in big Govt. /Pvt. Hospitals.

S. No.	Name of training	Batches / year	Training Duration	Training Centre
1.	Training Course on Master Trainers On (ICD-10 & ICF)	8	5 days	RHSTC Mohali & 6 FSUs
2.	Orientation training course on Health Information Management (For Officers)	8	5 days	RHSTC Mohali & 6 FSUs
3.	Orientation training course on Health Information Management (For non medical personnel)	14	5 days	RHSTC Mohali & 6 FSUs
4.	Orientation training course on Family of International classification (ICD-10 & ICF) (For Non-Medical Personnel)	14	5 days	RHSTC Mohali & 6 FSUs
5.	Orientation training course on Medical Record & Information Management for Non-Medical Personnel	8	5 days	RHSTC Mohali & 6 FSUs

* On regular basis, 52 batches of Training Courses covering more than 1040 candidates are held every year. In addition, special batches of National/International Training Courses are conducted on request of States/UTs & various organizations like IRDA, WHO etc.

3.5 CBHI Provides Internship and Health Management Programmes for the students of National Universities and Institutes.

3.6 CBHI publishes a concise list of all MDGs and comprehensive list of Health related MDGs i.e. Goal-4(Reduce Child Mortality) and Goal-5(Improve Maternal Health) and Goal-6 (Combat HIV/AIDS, Malaria and Other Diseases) in its annual publication "National Health Profile".

3.7 CBHI is playing an important role for implementation of Electronic Health Record in India. It is identified as Resource Centre for maintaining the licensing of SNOMED CT in the country.

3.8 Function as WHO Collaborating Centre on Family of International Classifications (ICD – 10 & ICF) in India with the following major objectives:-

- (1) To promote the development & use of the WHO Family of International Classifications (WHO-FIC) including the International Statistical Classification of Diseases and Related Health Problems (ICD), the International Classification of Functioning, Disability and Health (ICF), and other derived and related classifications and to contribute to their implementation and improvement in the light of the empirical experience by multiple parties as a common language.
 - (2) Contribute to the development of methodologies for the use of the WHO-FIC to facilitate the measurement of health states, interventions and outcomes on a sufficiently consistent and reliable basis to permit comparisons within and between countries at the same point in time by:
 - (a) Supporting the work of the various committees and work groups established to assist WHO in the development, testing, implementation, use, improvement, updating and revision of the member components of the WHO-FIC.
 - (b) Studying aspects related to the structure, interpretation and application of contents those concerning taxonomy, linguistics, terminologies and nomenclatures.
 - (c) Participating in the quality assurance procedures of the WHO-FIC classifications regarding norms of use, training and data collection and application rules.
 - (3) Networking with current and potential users of the WHO-FIC and act as reference centre by:
 - a. Assisting WHO Headquarters and the Regional Offices in the preparation of member components of the WHO-FIC and other relevant materials.
 - b. Participating actively in updating and revising the member components of the WHO-FIC.
 - c. Providing support to existing and potential users of the WHO-FIC and of the data derived in India and SEARO Region. Linkage will also be made with other countries of Asian Pacific Region for seeking status on FIC implementation.
 - (4) Work in at least one related and/or derived area of the WHO-FIC: Specialty- based adaptations, primary care adaptations, interventions/procedures, injury classification (ICECI).
- 3.9 Maintaining three websites: www.cbhidghs.nic.in (Main Website), www.cbhi.nic.in (Data entry portal for on-line data transmission by the States/UTs to CBHI) and www.hsprodindia.nic.in with information on CBHI, the Annual Publication “National Health Profile (NHP)”, National Recommendations on Improving & Strengthening the use of ICD 10 and Medical Record System, CBHI Training Calendar & Application Forms, Module & Work Book on ICD -10, Formats for (monthly/annually) Health Data Reporting from States/UTs to CBHI.

4. CBHI Linkages and Coordination

1. All 36 States/UTs of India
2. All 20 Regional Offices of Health & FW of GOI
National Rural Health Mission (NRHM) and National Health Programmes in India
3. Medical, Nursing & Paramedical Councils & Educational Institutions
4. Public Health/Medical Care Organizations and Research Institutions under Department of Health Research including ICMR and Various other Ministries
5. Census Commissioner & Registrar General of India
6. NITI Ayog, Government of India
7. Union M/o Statistics & Programme Implementation
8. Union Ministries of Defence, Railways, Labour, HRD, Rural Development, Communication & Information Technology, Shipping Road Transport & Highways, Home Affairs, Social Justice & Empowerment, etc.
9. WHO and other UN Agencies Concerned with Health and Socio-economic Development
10. All the WHO – Collaborating Centres on Family of International Classification (FIC) in the world Asia Pacific Network on FIC and countries of South East Asia Region
11. European Commission
12. IRDA, Hyderabad
13. Institute of Economic Growth (IEG).
14. Non-Government Organizations in Health & related sectors in India
For more details, please provide the link of CBHI-www.cbhidghs.nic.in

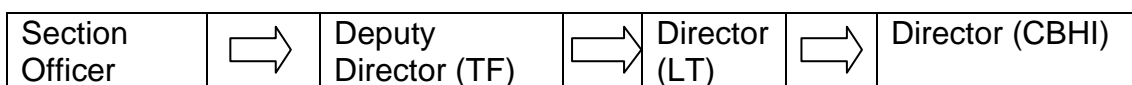
6. CBHI Training Centres

1.	Regional Health Statistics Training Centre (RHSTC), C/o Primary Health Centre Annexe, Phase 3-B-1, SAS Nagar, Mohali (Punjab) -160059. Tel/fax: 0172-2261070 E-mail: mohalirhstc@yahoo.com
2.	Medical Record Department and Training Centre, Safdarjung Hospital, Ansari Nagar, New Delhi -110029 Tel - 011-26707253 and 26165060 Fax No - 011-26163072 E-mail: mrtsjh@yahoo.com
3.	Medical Record Department and Training Centre JIPMER Puducherry - 605006 Tel – 0413 – 2272380 Extn. 4020 & 4022; Fax No – 0413 – 2272066 & 2272067 EE-mail: anisax_60@rediffmail.com
4.	CBHI Field Survey Unit Regional Office of Health & FW/GOI 2 nd floor, F-Wing, Kendriya Sadan,

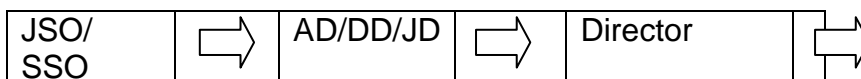
	Koramangala, Bangaluru - 560034 (Karnataka) Tel: 080 – 25537688, 25537310 Fax: 080 - 25539249 E-mail: rhobng@.nic.in
5.	CBHI Field Survey Unit Senior Regional Director (H & FW), Regional Office for Health & FW (ROHFW), Ministry of Health & FW, A-28, Vidhya Nagar, Near Axis Bank, Hoshangabad Road, Bhopal (M.P.) - 462026 E-mail: rohfwbho@mp.nic.in
6.	CBHI Field Survey Unit Regional Office of Health & FW/GOI BJ-25, BJB Nagar, Bhubaneswar-751014 (Odisha) Tel :0674 - 2431326 & 2431708; Fax: 0674 - 2431904 E-mail: rohfwbbs@rediffmail.com
7.	CBHI Field Survey Unit Regional Office of Health & FW/GOI Kendriya Sadan, Block B, Floor II, Sector 10, Vidyadhar Nagar, Jaipur – 302023 (Rajasthan) Tel: 0141 – 2236818 & 2236845; Fax: 0141 – 2233297 & 2236816 E-mail: rdrhojp@.nic.in
8.	CBHI Field Survey Unit Regional Office of Health & FW/GOI, Hall No.III, 9 th floor, Kendriya Bhavan, Aliganj, Lucknow-226024 (Uttar Pradesh) Tel: 0522- 2332399; Fax: 0522-2325268 E-mail: rdohlko@yahoo.co.in
9	CBHI Field Survey Unit Regional office of Health & FW/GOI 5 th Floor, Indira Bhawan, R.C. Singh Path, Patna - 800001 (Bihar), Tel: 0612- 2203711 Fax: 0612- 2202677, E-mail: rhopatna@gmail.com

➤ **CHANNEL OF SUBMISSION**

Administrative Channel



Technical Channel



Contact Details:-

<u>Designation</u>	<u>Contact No.</u>
<u>Section Officer</u>	<u>011-23062940</u>
<u>Deputy Director (TF)</u>	<u>011-23061429</u>
<u>Director (LT)</u>	<u>011-23061969</u>
<u>Director (CBHI)</u>	<u>011-23063175</u>
<u>AD/DD/JD</u>	<u>011-23062695</u>